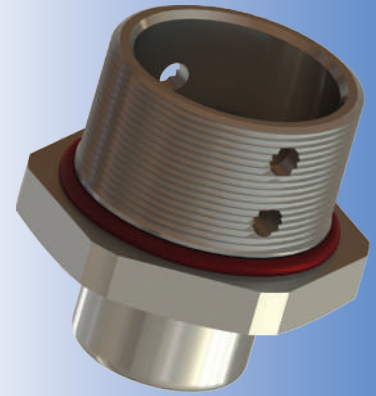


## Drain Plugs, Metal

Technical Details		
<b>Material</b>	<b>Body</b>	Brass, Brass Nickel Plated, Stainless Steel
	<b>Bushing</b>	Bronze
	<b>O-ring</b>	Silicone
<b>Ingress Protection Rating</b>	IP 68 - 5 Bar, 30 min IP 66	
<b>Operating Temperature</b>	<b>Seal Material</b>	<b>Silicone</b>
		-60°C to +85°C
<b>Thread Type</b>	Metric (M) EN 60423 NPT (N) ANSI ASME B1.20.1	
<b>Accessories</b>	<ul style="list-style-type: none"> <li>• Lock nuts</li> <li>• Gaskets (Washers)</li> </ul>	
<b>Remarks</b>	<ul style="list-style-type: none"> <li>• We recommend the use of lock nuts and gaskets to ensure IP rating for rough surfaces or through holes.</li> <li>• Accessories must be ordered separately.</li> <li>• O-ring available in Metric threads.</li> </ul>	



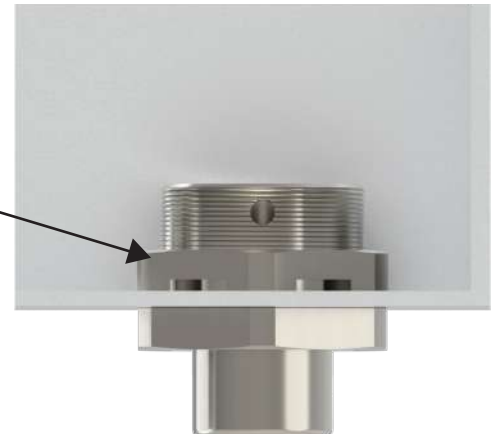
Ideally it should be located at the lowest point of the housing to ensure optimum draining.

Threaded Hole



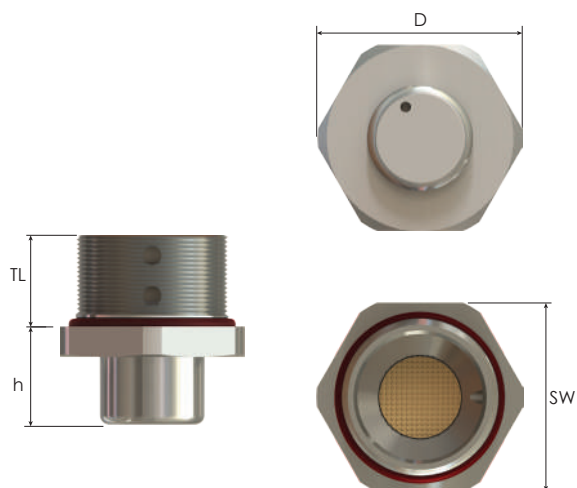
Non-Threaded Hole

Special Lock Nut  
for Drain Plug



Order Coding				
Part Number	Material	Seal	-	Lock Nut
Mandatory	Mandatory	Mandatory	-	Option
See table	B Brass BN Brass Nickel Plated X Stainless Steel	S Silicone	-	L Lock Nut
Example				
IBDRV-1M	BN	S	-	L

## Drain Plugs, Metal

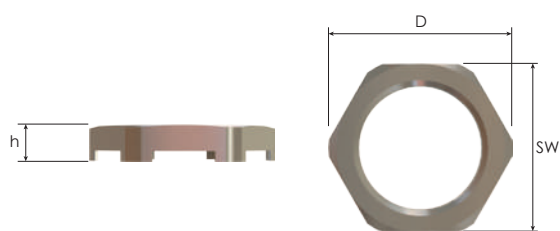
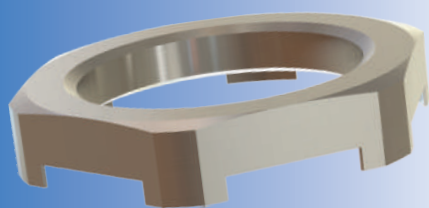


Thread Type **METRIC** acc. to EN 60423

Outer Thread Size (Male)	Outer Thread Length TL mm	Spanner Width SW mm	Outer Ø D mm	Height h mm	Part Number	Minimum Order Quantity
M20x1,5	15,0	25	27,5	16,0	IBDRV-1M	189
M25x1,5	15,0	30	33,0	16,0	IBDRV-2M	105

Thread Type **NPT** acc. to ANSI ASME B1.20.1

Outer Thread Size (Male)	Outer Thread Length TL mm	Spanner Width SW mm	Outer Ø D mm	Height h mm	Part Number	Minimum Order Quantity
NPT 1/2"	16,0	25	27,5	16,0	IBDRV-1N	189
NPT 3/4"	16,0	30	33,0	16,0	IBDRV-2N	105



## Special Lock Nuts for Drain Plugs

Inner Thread Size (Female)	Spanner Width SW mm	Outer Ø D2 mm	Height h mm	Part Number	Minimum Order Quantity
M20x1,5	25	27,5	5,0	BDRL-03	189
M25x1,5	30	33,0	5,0	BDRL-04	105
NPSL 1/2"	25	27,5	5,0	BDRLN-03	189
NPSL 3/4"	30	33,0	5,0	BDRLN-04	105